



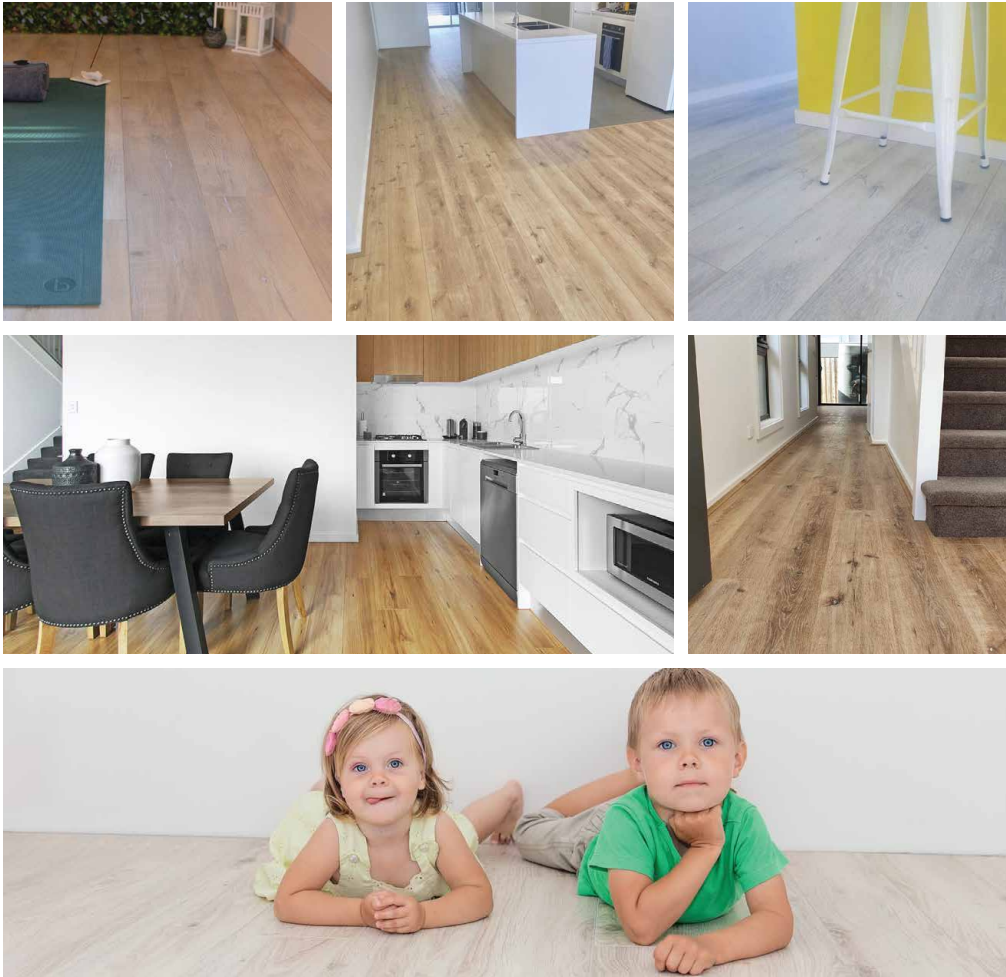
SWISH
LAMINATE FLOORING



SWISH
LAMINATE FLOORING
AQUA



NATURAL TOUCH LONGBOARD
LAMINATE FLOORING



Swish Longboard Laminate Flooring

If you are looking for a more affordable alternative to concrete or wooden flooring, we are pleased to present our Swish longboard laminate flooring.

Our range of Swish laminate flooring is just what you need to make your house chic and contemporary. Swish longboard laminate flooring allows for more experimentation in your floor designs.

You can choose from a wide variety of flooring material. The flooring material permits putting your imagination and fantasy into action. The look of the laminate floor will also support your décor ideas making your house as classy as you would want.

Benefits



Versatility in design. You can choose from a wide variety of laminate flooring that replicate the feel and touch of wood patterns. Our grains and knots are uniquely embossed to mimic natural wood in the best way possible.



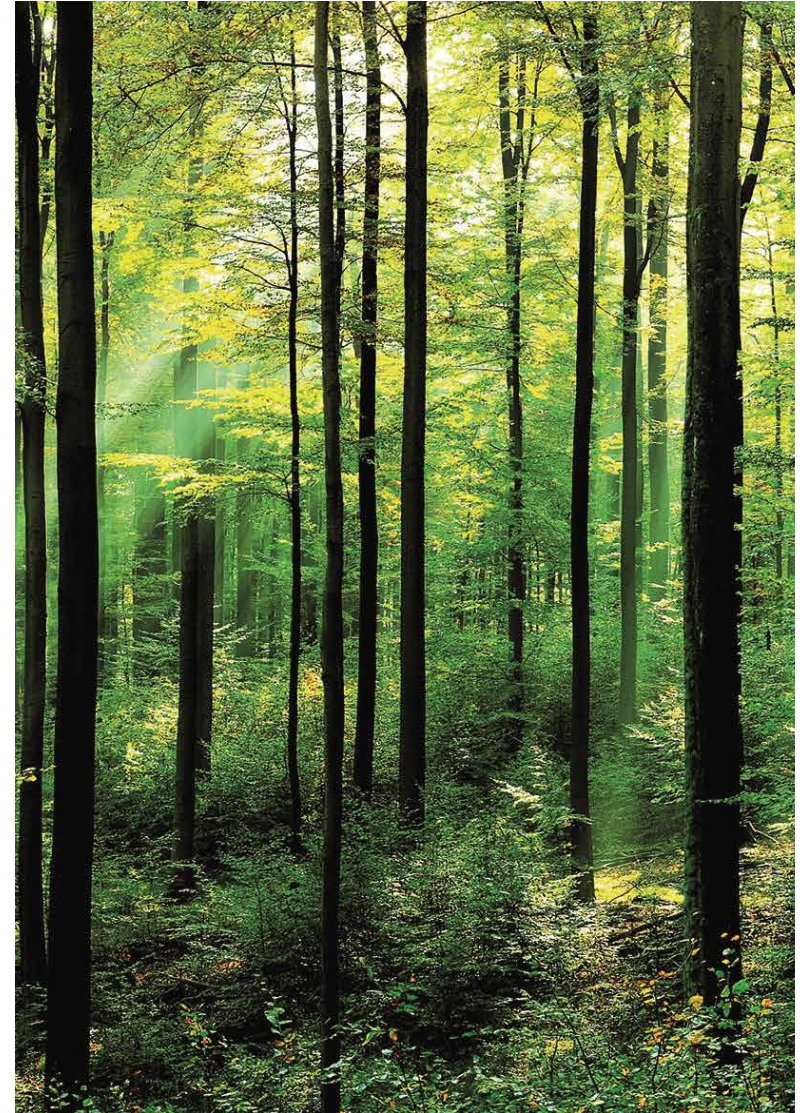
Easy maintenance. Laminate flooring is very easy to clean. Dry cleaning such as sweeping, dusting and vacuuming is very easy on this surface.



More affordable. Laminate flooring is less costly than hardwood to purchase.



Easy installation. Swish laminate flooring comes easy to install. The Valinge click planks are easy to lay with minimal labor, making it very cost effective.

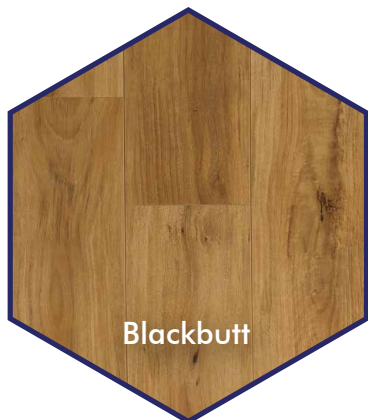




Features

Swish laminate flooring is a premium product with world class workmanship and excellence going into the design.

- Length of planks at 2200 mm (2.2m) which is apt for large spaces
- Plank width of 196 mm (0.196 m)
- Board thickness at 12 mm for more sturdiness
- EIR embossing of grains and knots to make the surface feel more natural to touch
- Waxed edges for better water resistance
- All accessories provided
- AC4 scratch resistance rating
- 20 years residential warranty



Blackbutt



Oak Falaise



Oak Koyoto



Spotted Gum



Oak Lille



Oak Satriano



Oak Texas



Oak Verona



Oak Viena



Oak Messie



Realistic
oak looking



Scratch
resistant



Suitable for
subfloor heating



Cigarette
burn resistant





Swish laminate aqua – Blackbutt

Swish Laminate Flooring Aqua

Swish laminate aqua flooring is the perfect flooring product for moisture-laden areas like the kitchen or the bathroom. It's moisture resistant, but also slip resistant, making it safe to walk on when wet. Swish laminate Aqua range is produced from natural sustainable raw HDF wood fibre materials. There is a 25 year guarantee on this flooring, which shows high confidence in its quality.

TECHNICAL SPECIFICATIONS:

- **Type:** Laminate Floating Floor
- **Thickness:** 12.3mm
- **Width:** 196mm
- **Length:** 2200mm
- **Surface Finish:** Matt Finish | EIR Natural Wood Grain Embossed
- **Edging:** 4 Side Micro-Bevelled Edge
- **Profile:** Valinge Drop Lock
- **Installation Method:** Floating, glue less on top of underlay
- **Pack Size:** 2.16 m2
- **Boards per pack:** 5
- **Abrasion Resistance:** AC5

Applications: For use in interior areas of private homes and commercial establishments





Blackbutt Aqua



Oak Amelia



Oak Chelsea



Oak Georgia



Oak Nashville



Oak Ostana





Oak Colonial



Oak Fremont



Oak Vermont



Oak Paleno



Oak Seattle



Spotted Gum Aqua



What is Swish laminate aqua?

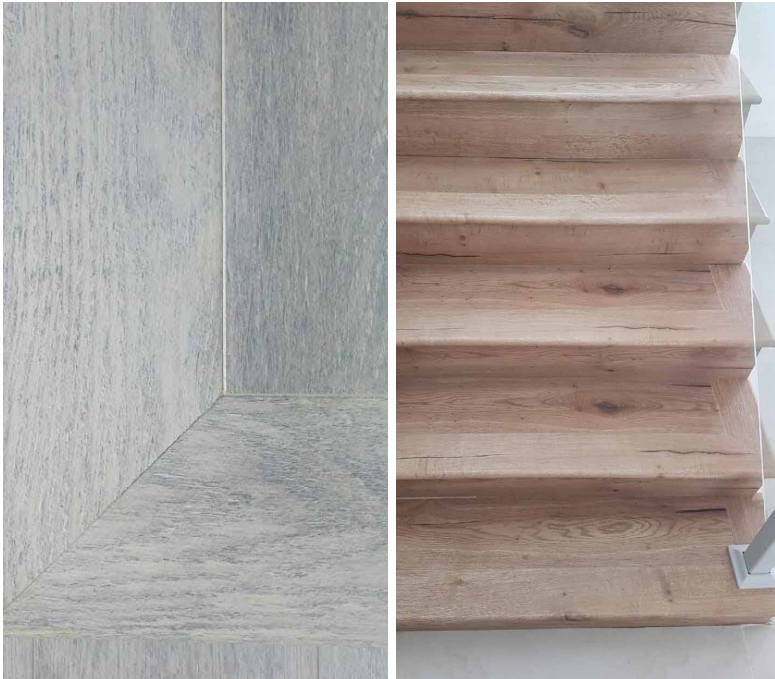
This is a range of stylish laminate flooring that is to mimic natural looking decors and Australian species designs. Swish Aqua laminate is made with an eye for beauty. It is an aesthetically pleasing flooring that has been made to the highest quality. It is not only warm and aesthetic but also super and tough enough to resist scratches.

WHAT SETS IT APART FROM THE REST?

Swish laminate aqua range is a notch above the rest of laminate flooring competing products. Here are a few reasons why it stands a cut above the rest.

- **Aqua core** – Swish laminate Aqua features a super low swelling HDF wood core. This makes it possible to lay the boards 32 meters in both directions without expansion gaps in the middle. This is a huge plus if you are flooring a large space. The floor maintains a more uniform look.
- **Easy installation**- This flooring feature the world's best Valinge click lock systems. This locking technology makes it easier and faster to install the flooring. No glues or nails are required. It is possible to install this flooring without heavy duty tools. Your hand's fingertips are enough for most of the work
- **Natural touch surface**- Swish laminate aqua range also strongly resembles natural Australian wood species. The patterns are embossed for a registered real wood feel.

- **Water resistant**- This flooring will withstand normal household spills up to 48 hours.
- **Super tough scratch resistance**- The surface has an AC5 rating. It also impacts resistant meaning items can be dropped on it without denting or chipping.
- **Effortless cleaning**- Swish laminate aqua flooring can be cleaned quickly. It is safe to clean with soap and water
- **Low maintenance and hard wearing** – It does not require sanding or staining like natural wood. The resistant surface makes this flooring suitable even for high foot traffic areas. The floor is also stain resistant making it maintain its looks even in a household with children and pets.
- **Non-fading** – This flooring will not require painting or staining as the covering coat does not fade easily.
- **Flame resistant** – This is safer to build with especially for a residential house



Accessories

Swish Laminate Stair Nosing is perfect for adding the finishing touches to your flooring and stairs. This product will match any of Swish laminate flooring products. This is compatible with all our Swish engineered oak flooring products. Slight alterations may be required when fitting. The Stair Nose provides a neat and attractive finish for the overall look where flooring and stairs meet.

Application: Primarily used to provide a neat and attractive finish on the edge of Swish laminate floor.

Eco flooring Ezi-lay

All in one underlay is composed of a light 2mm polyethylene with an integral damp proof membrane and sound insulation qualities are ideal for Swish engineered oak floors.

- 2- in -1 Moisture Control
- Conceals Minor Sub- floor Defect
- Reduces Noise Level
- LIFE TIME WARRANTY
- AAAC 4 Stars Rating



For Use Under: All Laminate, All Engineered, All Wood Flooring

Phone: 02 98584090
Fax : 02 85690535

Address: 180 Toongabbie Road,
Girraween 2145 NSW
AUSTRALIA

For more information visit our website
www.ecoflooring.com.au



ECO FLOORING SYSTEMS

© Copyright reserved by Eco Flooring Systems. All unauthorised
copying of this catalogue is strictly prohibited.
Product images may differ from actual product.