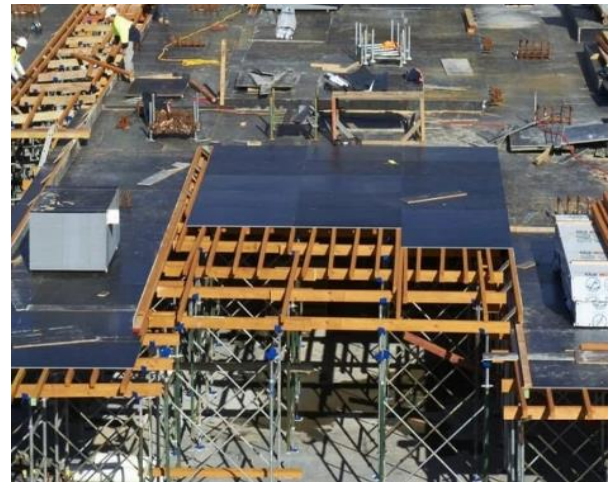




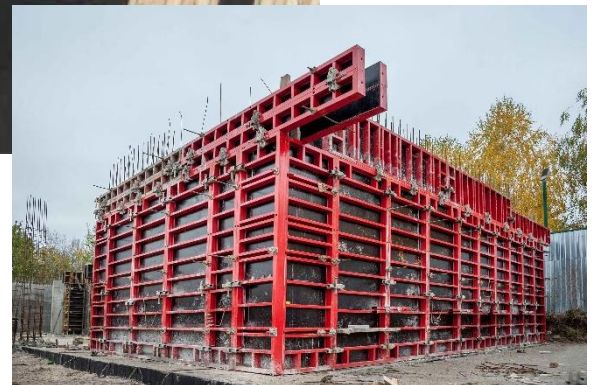
PLYPRO FORMWORK PLYWOOD : TECHNICAL SPECIFICATIONS



Transform your projects with our top-of-the-line F17 Plywood! Crafted to Australian Standards. PLYPRO FormPly comprises eucalyptus and birch plywood, offering a cost-effective and versatile solution for concrete construction pouring applications. It serves as an ideal face panel for various formwork systems, including steel frame, single-sided, timber beam, steel props, and scaffolding systems.



• Type	Engineered Plywood
• Origin	China
• Construction	Birch Veneers; Euclyptus Core
• Pattern	Single Strip
• Thickness	17mm
• Width	1200mm
• Length	2400mm/1800mm
• Surface Finish	Black Film – Phenolic resin coating
• Edging	Square Edge
• Stress Grade	F17
• Edge Seal	2 layers acrylic paint
• Sheet Coverage	2.888 / 2.16m ²
• Weight/Sheet	23 kg/31kg
• Bond	A-Bond(phenolic Resin)
• Formaldehyde	Super E0
• Environmental	FSC certified
• Application	Civil Engineering; Mining; Table Forms; Deck Ceilings
• Tolerance	+/- 0.5mm Thick; +/-1mm Square
• Australian Standard	AS/NZ 6669-2016



ECO FLOORING SYSTEMS®
— SINCE 1996 —

Eco Flooring Australia Pty Ltd.
180, Toongabbie Road,
Girraween 2145 NSW
Ph: 02 9631 7400
www.ecoflooring.com.au
Sales@ecoflooring.com.au





Preparation and Maintenance

Proper handling and maintenance are essential for prolonging the lifespan of plywood panels. This guide offers instructions on how to handle and utilize Furuida formwork plywood effectively to optimize results and increase the number of reuses. Below are the recommended steps:

Storage and Transportation:

- Place the plywood on leveled ground to prevent bending.
- Once the strapping is removed, refrain from moving the pallet.
- Shield the panels from water and direct sunlight exposure.

Preparation and Forming:

- Furuida Plywood's F17 Formply comes with all edges coated to shield against moisture. Ensure to reapply this protection after cutting or drilling.
- Fill any gaps between veneers with putty and seal the edges afterward.
- Prior to drilling, pilot tie-rod holes.
- Apply an edge sealant by painting unprotected edges and drilling holes at least once. Consult your local paint supplier for the appropriate sealant.
- Before each use, apply oil to the panels and opt for a high-quality, eco-friendly concrete release agent.
- To minimize surface damage, secure support to the panel from its rear.

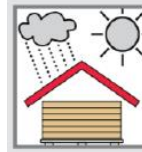
Reducing the 'Rippling' Effect:

Concrete finish quality and plywood formwork reusability are influenced by on-site conditions. Plywood is typically delivered in a relatively dry state (<15% mc). Initial exposure to site conditions and early panel use may lead to localized swelling of the wood veneer, causing impressions on the concrete surface, known as 'rippling.'

- Prior to initial use, condition plywood by applying a wet cement slurry or grout wash to mitigate noticeable swelling.

After Use:

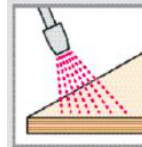
- Promptly clean plywood panels post-use.
- Utilize plastic or nylon tools to prevent surface damage.
- Degrease the surface with soapy water before reapplying a release agent.
- Address small scratches with suitable mastic.
- Fill holes or scratches with mastic or epoxy filler as needed.



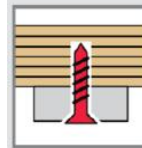
Protect from weather



Seal edges & holes



Oil panels before use



Fasten from the back



Clean panels after use



ECO FLOORING SYSTEMS®
— SINCE 1996 —

**PLY
PRO**

Eco Flooring Australia Pty Ltd.
180, Toongabbie Road,
Girraween 2145 NSW
Ph: 02 9631 7400
www.ecoflooring.com.au
Sales@ecoflooring.com.au